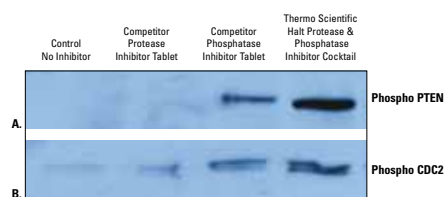


Cell Extraction and Lysis

Inhibitor cocktails - protease



Thermo Scientific Halt Protease and Phosphatase Inhibitor Cocktail preserves phosphorylation of phosphorylated PTEN and CDC2 in HeLa cell lysate more effectively than tablet-format phosphatase inhibitor cocktail.

HeLa cells were serum starved for 24hr. Serum-containing media was added to the cells for 15min and cells were lysed with Thermo Scientific M-PER[®] Mammalian Protein Extraction Reagent in the presence or absence of 1X inhibitor cocktail. Tablets were dissolved in 1mL of buffer and then diluted 1:100 into the lysis reagent. The Halt Protease and Phosphatase Inhibitor Cocktail was added directly to the lysis reagent. Lysates were analysed by Western blot for preservation of protein phosphorylation using the antibodies indicated. Panel A. Phosphorylated PTEN, Panel B. Phosphorylated CDC2. The antibodies recognise phosphorylation on serine and tyrosine, respectively.

Halt protease and phosphatase inhibitor cocktails, Thermo Scientific Pierce

Thermo
SCIENTIFIC

NEW

PN

Complete protection from proteases and phosphatases in one reliable cocktail.

- Immediate inhibition – no need to thaw, open multiple tubes or wait for tablets to dissolve
- Compatible with Thermo Scientific Pierce cell lysis buffers
- MS-compatible because it does not contain AEBF which can cause peaks to shift

This broad spectrum inhibitor cocktail is specifically optimised to protect proteins from degradation during extraction and purification.

The cocktail contains inhibitors against the major classes of proteases and phosphatases. To promote the inhibition of metalloproteases 0.5 M EDTA is provided in a separate tube.

Inhibitor	Target
Sodium fluoride	Ser/Thr and acidic phosphatases
Sodium orthovanadate	Tyr and alkaline phosphatases
β-glycerophosphate	Ser/Thr phosphatases
Sodium pyrophosphate	Ser/Thr phosphatases
Aprotinin	Ser proteases
Bestatin	Amino-peptidases
E64	Cysteine proteases
Leupeptin	Ser/Cys proteases
EDTA (optional)	Metalloproteases

Catalogue No	Description	Quantity
PN78440	Halt protease and phosphatase inhibitor cocktail (100X)	1mL
PN78441	Halt protease and phosphatase inhibitor cocktail, EDTA-free (100X)	1mL
PN78442	Halt protease and phosphatase single-use inhibitor cocktail (100X)	24 x 100µL
PN78443	Halt protease and phosphatase inhibitor single-use cocktail, EDTA-free (100X)	24 x 100µL
PN78444	Halt protease and phosphatase inhibitor cocktail (100X)	5 x 1mL
PN78445	Halt protease and phosphatase inhibitor cocktail, EDTA-free (100X)	5 x 1mL
PN78446	Halt protease and phosphatase inhibitor cocktail (100X)	10mL
PN78447	Halt protease and phosphatase inhibitor cocktail, EDTA-free (100X)	10mL